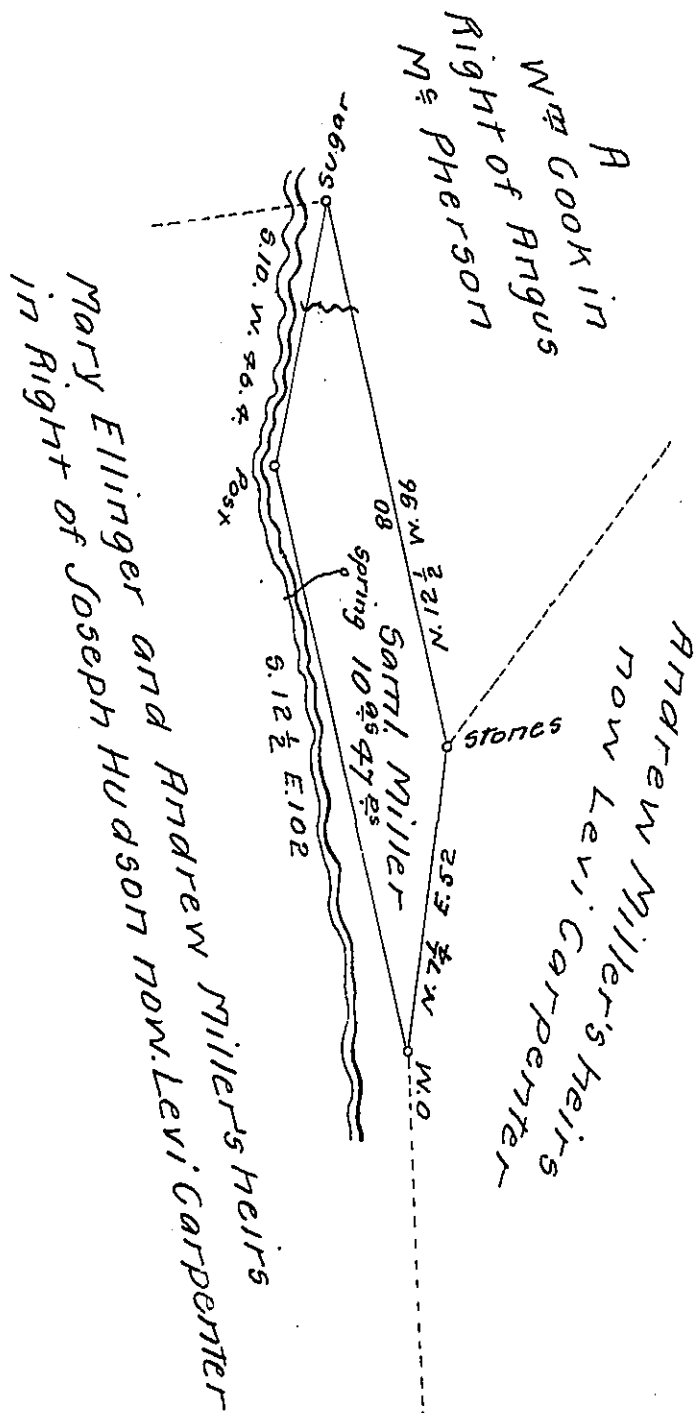


FORM NO. 1.



Situate on Little Mills Creek in Londonderry Top. Bedford County, containing Ten Acres, and forty seven Perches. And the usual allowance of six per cent for Roads &c. Surveyed the 17<sup>th</sup> day of March A.D. 1859. In pursuance of a Warrant Granted to Sam<sup>l</sup> Miller in Trust for the Heirs, and Legal Representatives of Andrew Miller dec<sup>d</sup> dated the 23<sup>rd</sup> day of Oct. A.D. 1856, Courses according to a True Meridian.

Sam<sup>l</sup> Ketterman C. S

To ~~John Howe~~ Esqr.

W<sup>m</sup> M. Keim S. G

IN TESTIMONY that the above is a copy of the original remaining on file in the Department of Internal Affairs of Pennsylvania, made conformably to an Act of Assembly approved the 16th day of February 1833, I have hereunto set my hand and caused the Seal of said Department to be affixed at Harrisburg, this fourth day of September 1907

*Henry Howards*

Secretary of Internal Affairs.